

**B14**

Wiregrass Biennial



**B14**

WIREFRASS BIENNIAL

**JULY 17 - SEPTEMBER 28, 2014**



**"PROVOCATIVE AND EXQUISITELY BEAUTIFUL, B14 IS WORTH THE VISIT." - JODY KAMINS HARPER, THE LOCAL**

"The B14 exhibition holds moments of incredible visual beauty." - Jody Kamins Harper

"Zonkey, buried wolves found among contemporary pieces in Dothan art exhibit." - Peggy Ussery, Dothan Eagle

"Forget the Liger, Alabama Biennial has a Zonkey."  
- Benjamin Sutton, Artnet



## B14: WIREGRASS BIENNIAL



### **A JURIED EXHIBITION OF CONTEMPORARY WORKS BY ARTISTS IN THE SOUTHEAST**

B14, the Wiregrass Biennial, showcases the region's most recognized contemporary artists, illustrating the Southeast's rich cultural heritage. The exhibition is open to artists living and working in Alabama, Georgia, Florida, Mississippi, North Carolina, South Carolina, Tennessee and Louisiana. The Wiregrass Museum of Art encourages innovative and progressive work that utilizes a variety of art forms and media. This year's exhibition features paintings, sculpture, photography, mixed media and installation art.

# BIENNIAL ARTISTS

## JAMES RODGER ALEXANDER



### BIRMINGHAM, AL

Equipoise: Segmented Arc, 2010  
Steel and refractory brick  
72" x 68" x 9"

## DAN BETHUNE



### GEORGETOWN, TN

Edge of..., 2013  
Resin and putty  
34" x 3" x 5"

## PHILLIP COUNSELMAN



### SILVERHILL, AL

Spit and Sputter III, 2013  
Ceramic  
11" x 11" x 15"

# BIENNIAL ARTISTS

## STEPHANIE DAVENPORT



### ECLECTIC, AL

Alter, Alter on the Wall, 2013  
Acrylic and resin on wood  
60" x 30"

## RACHEL DAVID



### NEW ORLEANS, LA

Covered Vacuum, 2013  
Hand forged and fabricated  
steel, paper  
36" x 17" x 17"

## CLAIRE LEWIS EVANS



### TUSCALOOSA, AL

Song, 2011  
Bronze  
16 1/2" x 28" x 18"

## WILLIAM FENN



### MONTGOMERY, AL

Mindfulness, 2014  
Inkjet print  
13" x 13"

# BIENNIAL ARTISTS

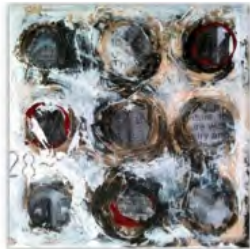
## JENNY FINE



### ENTERPRISE, AL

Daddy Dancing with Flat  
Granny, 2013-2014  
Archival pigment print  
20" x 20"

## SCOTT FISK



### BIRMINGHAM, AL

War Journal 1, 2011  
Mixed media  
11" x 11"

## JOANNE FOGLE



### ALABASTER, AL

Quarry I, 2013  
Oil, charcoal and conté crayon  
30" x 53"

## ANNEMARIE POYO FURLONG



### GAINESVILLE, FL

i see you, 2013  
Digital inkjet print  
12" x 40"



# BIENNIAL ARTISTS

## BRIAN GLAZE



### BEAUFORT, SC

Love Triangles, 2012  
Found objects and digital  
prints  
7 1/2" x 9 1/2" each

## JONI GRUBER



### TUSCALOOSA, AL

Stain, 2014  
Encaustic on panel  
12" x 9"

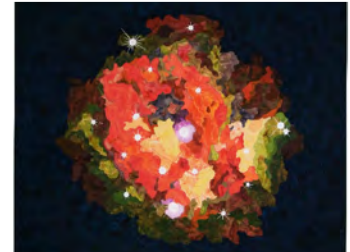
## AMY GUIDRY



### LAFAYETTE, LA

The Pack, 2011  
Acrylic on canvas  
10" x 20"

## CHRISTINE HAGER-BRAUN



### DURHAM, NC

Cocoon Nebula (IC 5146), 2011  
Fiber  
41" x 45"

# BIENNIAL ARTISTS

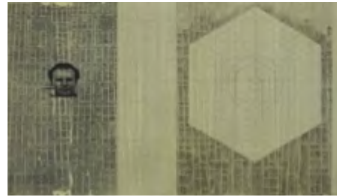
## ANDREW HAIRSTANS



### MONTGOMERY, AL

Plan I (Model for Asylum), 2011  
Graphite, tea staining, acrylic  
gesso and Xerox transfer  
10 1/2" x 16 1/2"

## ANDREW HAIRSTANS



### MONTGOMERY, AL

Plan 3 (Model for Asylum), 2011  
Graphite, tea staining, acrylic  
gesso and Xerox transfer  
10" x 18"

## RICHARD HERZOG



### SARASOTA, FL

Urban Dwelling/Tree Houses,  
2011  
Acrylic, wood and steel  
72" x 60" x 60"

## JESSICA HILVITZ



### CLEMSON, SC

Cookbook series: Page 39,  
2012  
Photomontage  
6" x 4"

# BIENNIAL ARTISTS

## JESSICA HILVITZ



## CLEMSON, SC

Cookbook series: Page 214,  
2012  
Photomontage  
4" x 6"

## JESSICA HILVITZ



## CLEMSON, SC

Cookbook series: Page 248,  
2012  
Photomontage  
6" x 4"

## KAYLEE HOBBS



## HOPE HULL, AL

The Tree of Knowledge, 2013  
Block print, ed. 1/100  
24" x 18"

## STACEY M. HOLLOWAY



## BIRMINGHAM, AL

The Grass is Always Greener,  
2011  
Wood, steel, foam, aluminium  
and synthetic grass  
55" x 54" x 144"

# BIENNIAL ARTISTS

**TONIA HUGHES**



**AMERICUS, GA**

The Defying Tree, 2012-2013  
Gelatin silver print  
42" x 42"

**JOHN HYCHE**



**BIRMINGHAM, AL**

Stabilize, 2014  
Mixed media  
48" x 36"

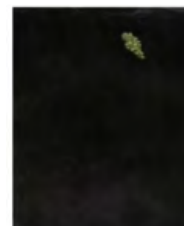
**AMELIA KEY**



**JACKSON, MS**

Colony, 2013  
Mixed media  
24" x 36" x 24"

**LAUREN LAKE**



**BIRMINGHAM, AL**

Cover, 2010  
Graphite on magazine  
11 1/2" x 9"

# BIENNIAL ARTISTS

LAUREN LAKE



## BIRMINGHAM, AL

NYTP5, 2010  
Graphite on magazine  
11" x 9 1/2"

JOAN LAMB



## MIDLAND CITY, AL

Canned Summer, 2014  
Acrylic on canvas  
19" x 25 1/2"

FREDERIC LECUT



## HEADLAND, AL

Veiled Black & White, 2014  
Mosaic  
28 3/4" x 35 3/8"

MELANIE MORRIS



## BIRMINGHAM, AL

Closer & Closer, 2014  
Acrylic on panel  
24" x 24"

# BIENNIAL ARTISTS

**JULIA MORRISROE**



## **GAINESVILLE, FL**

Transitions 0405bvd, 2012  
Acrylic and polymers on  
canvas  
33 3/4" x 26"

**MIRIAM NORRIS OMURA**



## **BIRMINGHAM, AL**

She Had Lips as Red as a Saint's,  
2014  
Mixed media and fiber  
7" x 4 1/2"

**MIRIAM NORRIS OMURA**



## **BIRMINGHAM, AL**

Abandoned on the Reservation =  
Church in a Field, 2014  
Fiber  
7" x 4 1/2"

**SARAH NATHANIEL**



## **DECATUR, GA**

Untitled (one-off) and  
Untitled (one-off No.2), 2014  
Giclee print  
18" x 24" (each)

# BIENNIAL ARTISTS

EMILY QUINN



DECATUR, AL

The Tourist, 2013  
Oil on wood panel  
24" x 24"

EMILY QUINN



DECATUR, AL

View to the Mountain, 2013  
Oil on canvas  
48" x 36"

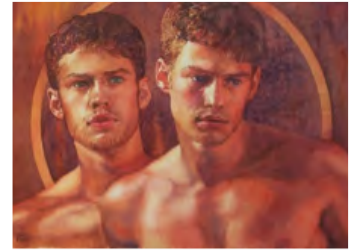
JANE SEGRETT



BONIFAY, FL

Brassy, 2014  
Acrylic on canvas  
50" x 36"

MICHAEL VAUGHN SIMS



TYLER, AL

Twin Heads, 2014  
Watercolor  
15 1/2" x 21 1/2"

# BIENNIAL ARTISTS

CATHERINE MCLEOD SMITH



**DOTHAN, AL**

Recycled Beginnings, 2013  
Graphite on paper on board  
17" x 21"

JESSICA SMITH



**LIVINGSTON, AL**

Breathe, 2012  
Stoneware  
6" x 6" x 6"

MICHAEL SWANN



**BIRMINGHAM, AL**

Lightspeed, 2014  
Urethane and enamel  
48" x 48"

BETHANY TAYLOR



**GAINESVILLE, FL**

Clouds One Through Eight of  
Nine (Punched), 2011  
Ink and powdered graphite on  
paper  
12" x 12" (each)



# BIENNIAL ARTISTS

## BETHANY TAYLOR



### GAINESVILLE, FL

Doing Fine on Cloud Nine, 2011  
Powdered graphite on vinyl,  
punching bag, boxing gloves  
85" x 56" x 46"

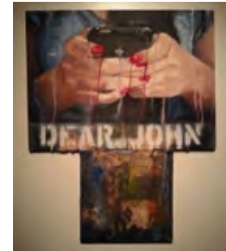
## PAMELA VENZ



### BIRMINGHAM, AL

Mitt Sjónarhorn: Húsavík  
8:30p.m. Reflection, 2013  
Ink jet print  
24" x 33"

## CHELSEY WILLIAMS



### TROY, AL

Dear John, 2014  
Mixed media  
36" x 18"



# PURCHASE AWARDS



**JUDGE: DOROTHY JOINER, LOVICK P. CORN PROFESSOR OF ART HISTORY, LAGRANGE COLLEGE**

Bethany Taylor, 1st

Christine Hagar-Braun, 2nd

Jenny Fine, 3rd

Claire Lewis Evans, Student







126 Museum Ave.  
Dothan, AL 36303  
334.794.3871  
[wiregrassmuseum.org](http://wiregrassmuseum.org)

**wma**  
wiregrass museum of art